



RFID *Smart Warehousing Cloud*

CONTENTS



01

Features of Warehousing

02

Why you need a Smart Warehousing Cloud?

03

How it Works



01 *Features of Traditional Warehousing*





Key points for Warehousing Management

Stocktaking

Barcode management, Easy to lose and break, Unable to acquire the stock data in real time, Human mistakes in recording the stock or conducting stocktaking



Warehousing

Reply on manually recording and checking, Messy stock shelf when the stock is large.



Handling

Workers waste a lot of time in search of the products and the recording for handling is easy to be missed.



Features of Traditional Warehousing



Manually operation, low efficiency



Manually recording, easy to make mistakes



Piles of files, hard to track the data and easy to incur lagged calculation



No real-time data, not predictable



02 *Why you need a Smart Warehousing Cloud?*





Do you have these pain points on warehousing?



Do you feel it is inefficient to read the monthly stock statistics report?



Do you want to acquire the real time purchasing and warehousing data?



Do you want to accurately get the knowledge of the most frequently ex-warehousing products?



Do you hope to make instant decision on promoting the obsolete products based on the in-warehousing and ex-warehousing data?



Upgrading of Warehousing System

First-generation warehousing :
Make record on paper and Excel

20XX

Second-generation warehousing :
Scanner, Barcode and QR code

20XX

Third-generation warehousing:
SaaS+RFID

20XX

Smart Warehousing Cloud: SaaS-based + RFID-applied

--Create More Value with Smart Warehousing



- Real-time Stocktaking & real-time data
- Have an accurate knowledge of the best sellers
- Make an inventory based on big data
- Conduct on-sale promotion on obsolete materials in a timely manner

The Value of the system is Measured by ROI

Build your cash flow strategy based on the warehousing management on the materials that occupy the most of your cash flow.

Smart warehousing system aims to improve your operational efficiency, stock turnover, return on equity and return on capital.



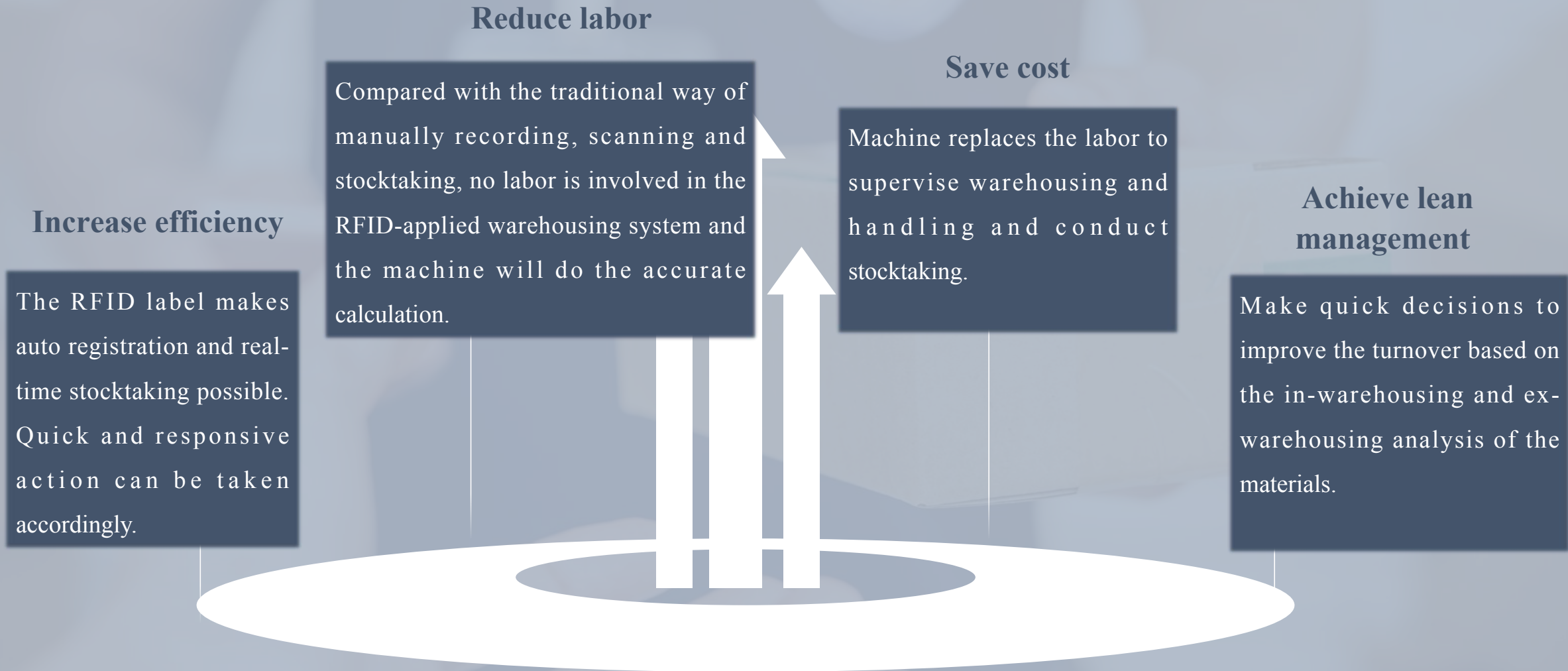


03 *How it Works*





Advantages of RFID Warehousing Cloud



AI Big Data Man-machine Integrated System: Whole-process Monitoring & Real Time Stock Checking

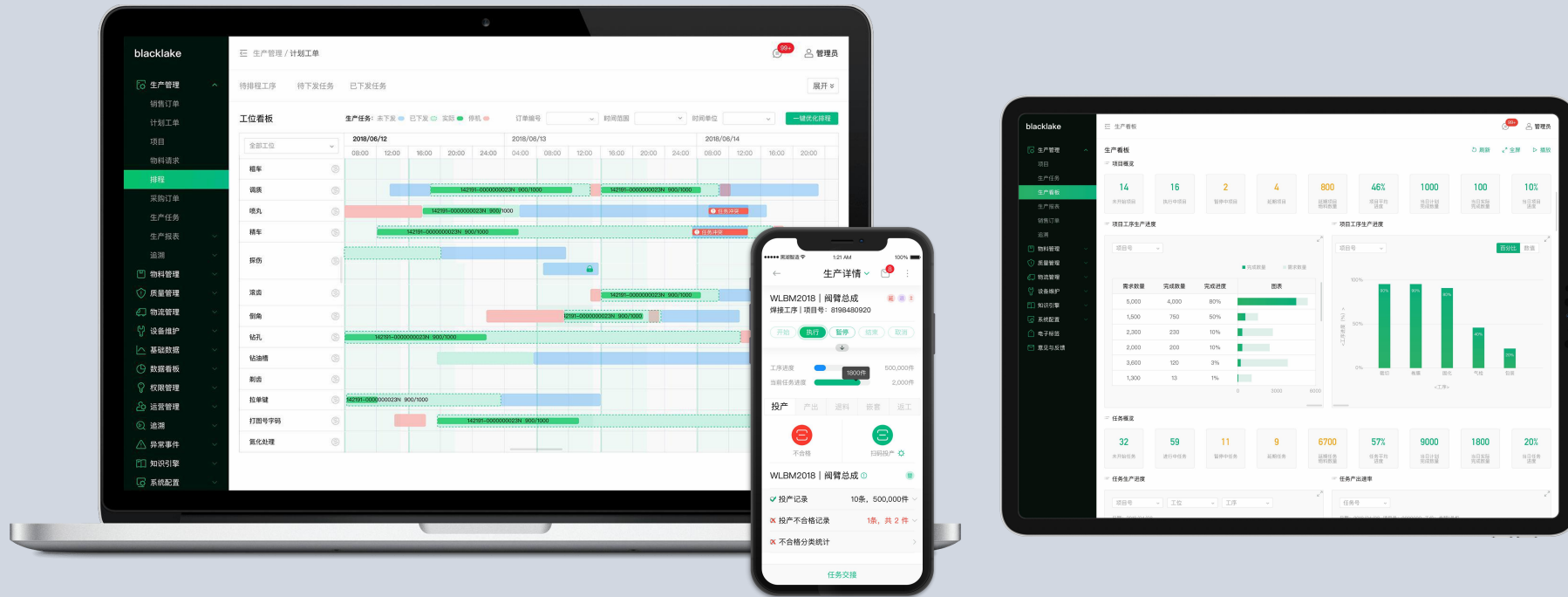


Purchasing staff purchases based on big data analysis.

Warehouse operator can conduct in-warehousing and ex-warehousing check with the assistance of big data.

The man-machine integrated system highly improve the decision efficiency.

The system will assign the picking task in a countdown manner and warehouse operator can conduct the picking task in warehouse according to the production schedule.



Schedule Arrangement

Production schedule visualization. Material feeding status of each production process will be displayed.

Task Countdown

Warehouse keeper receives picking task from the APP installed on the phone and completes the picking task within the countdown.

Eliminate Management

All tasks are assigned by the system. No man management is needed.

A photograph of a large warehouse interior. The scene is filled with high, industrial shelving units (pallet racks) that stretch into the distance. These racks are densely packed with numerous cardboard boxes of various sizes. In the foreground, a yellow counterbalance forklift is parked on a light-colored floor. The forklift has a black mast and a white pallet. The floor is marked with yellow and blue lines. The lighting is bright and even, typical of a modern warehouse. A dark, semi-transparent banner is overlaid across the center of the image, containing white text.

**Create More Value with
Smart Warehousing!**